

WARRANTY NOTICE:

There are **NO WARRANTIES**, either expressed or implied. Neither the seller nor manufacturer will be liable for any loss, damage or injury, direct or indirect, arising from the use or inability to determine the appropriate use of any product. Before any attempt at installation, all drawings and/or instruction sheets should be completely reviewed to determine the suitability of the product for its intended use. In this connection, the user assumes all responsibility and risk. We reserve the right to change specification without notice. Further, Chris Alston's Chassisworks, Inc., makes **NO GUARANTEE** in reference to any specific class legality of any component. **ALL PRODUCTS ARE INTENDED FOR RACING AND OFF-ROAD USE AND MAY NOT BE LEGALLY USED ON THE HIGHWAY.** The products offered for sale are true race-car components and, in all cases, require some fabrication skill. **NO PRODUCT OR SERVICE IS DESIGNED OR INTENDED TO PREVENT INJURY OR DEATH.**

INSTALLATION GUIDE



Billet Throttle Linkage for Ford FE Block Applications

P/N: TCP TL-01



Total Control Products
A Chris Alston's Chassisworks, Inc. Brand
8661 Younger Creek Drive
Sacramento, CA 95828
Phone: 916-388-0288
Technical Support: tcptech@cachassisworks.com

7903-TL-01

REV 01/18/05

DESCRIPTION:

BILLET THROTTLE LINKAGE FE FORD 12-7/8" ADJUSTABLE LENGTH

APPLICATIONS:

FITS MOST BIG BLOCK FORD CARS WITH RIDGID THROTTLE LINKAGE, NON-CABLE TYPE

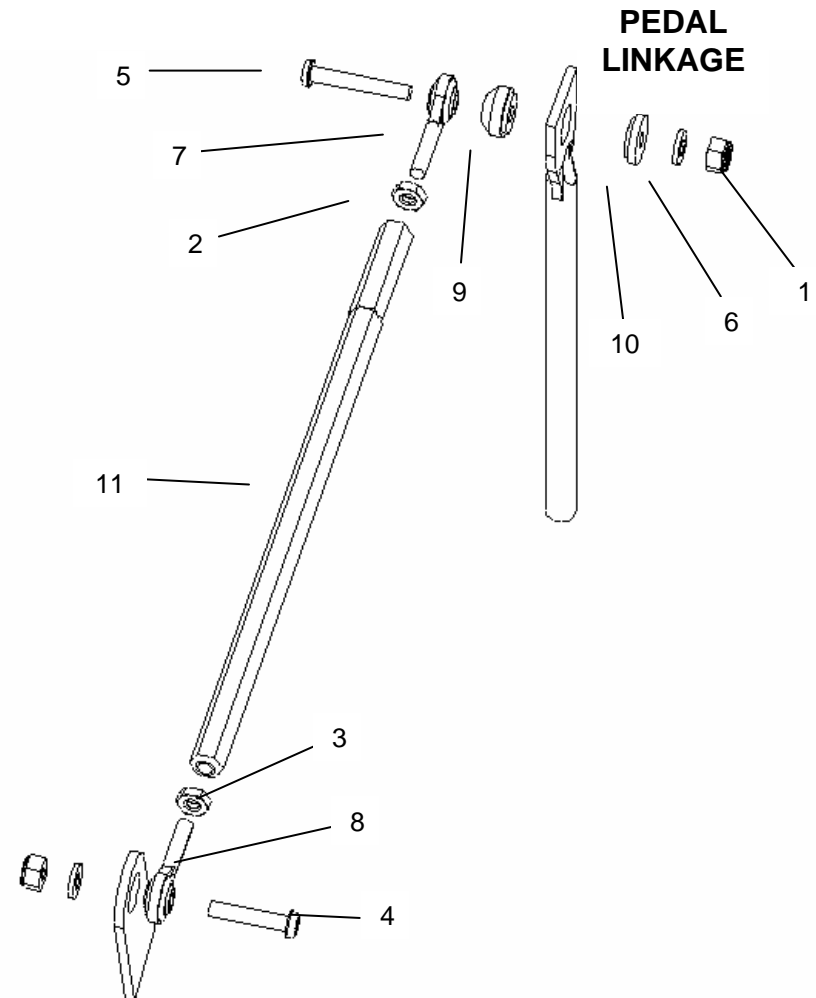
PARTS LIST

Key	Item Number	Description	Qty
1	3101-019-32C	Locknut, 10-32 Nylon Insert	2
2	3102-019-32LC	Jam Nut 10-32 LH	1
3	3102-019-32RC	Jam Nut 10-32	1
4	3104-019F1.00C	Button Head Cap Screw 10-32 x 1"	1
5	3104-019F1.25C	Button Head Cap Screw 10-32 x 1-1/4"	1
6	3107-019S-S	Washer, 10, Flat, Stainless	2
7	3111-019X019-L	Rod End 3/16 LH	1
8	3111-019X019-R	Rod End 3/16	1
9	7916-002	Spacer, Tapered	1
10	7916-003	Spacer, Flat	1
11	7916-004	Throttle Linkage Shaft 11-1/2"	1

INFORMATION

- Thread rod ends completely into rod.
 - Leave jam nuts loose.
- The groove around the throttle linkage shaft indicates the end with left hand threads.
- The rod end and hardware can be mounted on the reverse side of the linkage if necessary.
- Mount one end of linkage and adjust length by holding loose rod end and turning rod.
- Use wrench to hold throttle linkage shaft when tightening jam nuts.

DIAGRAM



**CARBURETOR
LINKAGE**